



COMMERCIAL

DESIGNED WITH YOU IN MINDSM

ELECTRIC TANK-TYPE WATER HEATERS 3KW THRU 12KW

RHEEM/RUUD Electric Commercial Water Heaters are designed to provide hot water where applications require moderate quantities. These units are suited for a wide variety of applications such as retail stores, small offices or any location where a modest amount of hot water is required.

Construction Features:

LONG LIFE TANK DESIGN – Proprietary steel formulation with a unique coat of high temperature porcelain enamel to maximize corrosion resistance resulting in a superior tank design. A patented R-Tech anode rod provides advanced technology; equalizing aggressive water action while prolonging the effective life of the anode rod and in turn the life of the tank.

LONG LIFE HEATING ELEMENTS – Our patented resistor elements are designed with a specially treated, double layer of magnesium oxide and copper to resist corrosion. Low watt density; means reduced surface temperature to minimize scale build-up and more surface to heat water. Replacement elements screw in easily.

EFFICIENT DESIGN – 2" of rigid polyurethane foam insulation provides superior insulating qualities resulting in reduced operating costs.

AUTOMATIC TEMPERATURE CONTROL – A surface mounted thermostat automatically cycles on and off to maintain the water temperature at a desired preset level.

TEMPERATURE LIMITING CONTROL – Automatically and safely cuts off the power in the unlikely event that the water temperature exceeds 190°F.

TEMPERATURE AND PRESSURE RELIEF VALVE – AGA rated and factory supplied with each unit.

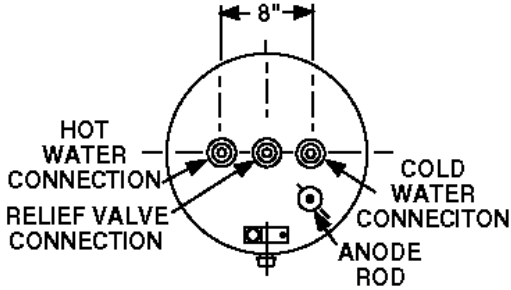
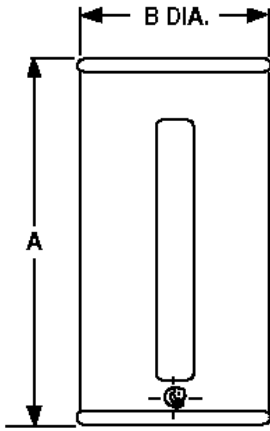


Certifications and Ratings:

EFFICIENCY – These models have been tested according to DOE test procedures, and exceed the minimum energy factor requirements of ASHRAE Standard 90.1b-1992 (Part of the Federally mandated Energy Policy Act (EPAct)). Also exceeds energy efficiency codes of all states including California Energy Commission (CEC).

SAFETY AND CONSTRUCTION – These products are design certified by Underwriters Laboratories (UL) to meet UL standard 174 as electric storage tank water heaters.

CERTIFIED FOR A 150 PSI MAXIMUM WORKING PRESSURE.



WATER CONNECTIONS ALL 3/4" N.P.T.

RECOMMENDED SPECIFICATIONS

Water heater(s) shall be model _____, manufactured by RHEEM/ RUUD, having electrical input of _____ Kw and a recovery rate of _____ GPH at a 100°F temperature rise. Water heater(s) shall have a storage capacity of _____ gallons. Water heater(s) shall have the UL seal of certification and supplied with an AGA rated temperature and pressure relief valve. Tank(s) interior shall be coated with a high temperature porcelain enamel and furnished with an R-Tech resistored magnesium anode rod rigidly supported. Water heater(s) shall meet or exceed the energy factor requirements of ASHRAE Standard 90.1b-1992. Tanks shall have a working pressure rating of 150 psi, and shall be completely assembled. Water Heater(s) shall be equipped with copper, low watt density, resistored, "screw-in" type elements. Tank shall be insulated with 2" of rigid polyurethane foam insulation. Water Heater(s) shall be equipped with surface mounted thermostats each with an integral, manual reset, high limit control. Water heater(s) shall be covered by a three year limited warranty against tank leaks.

DIMENSIONAL INFORMATION (All dimensions shown in inches)

MODEL NUMBER	TANK CAPACITY GALLONS	A	B	APPROX.SHIPPING WEIGHT (LBS.)
ELDS30	30	29-1/16	21	105
ELDS40	40	31-7/16	23	135
ELD40	40	45-13/16	20-7/16	105
ELDS52	50	38-5/16	23	150
ELD52	50	56-3/8	20-7/16	125
ELD80	80	58-15/16	24-7/16	200
ELD120	120	61-7/8	28-1/4	330

WATER TEMPERATURE RATINGS:

Thermostat Type:	Surface Mounted
Min. Delivered Temperature:	110°F
Max. Delivered Temperature:	170°F
High Temperature Limit:	190°F

ELECTRICAL CHARACTERISTICS AND CAPACITIES (Non-Simultaneous/Single Phase Operation)

ELEMENT WATTAGE UPPER/LOWER	RECOVERY CAPACITIES GPH @ TEMPERATURE RISE OF					FULL LOAD CURRENT (AMPS) (ALL TERMINALS)			
	40°	60°	80°	100°	120°	208	240	277	480
3000/3000	31	20	15	12	10	14.4	12.5	10.8	6.3
4000/4000	41	27	20	16	13	19.2	16.7	14.4	8.3
4500/4500	46	31	23	18	15	21.6	18.8	16.2	9.4
5000/5000	51	34	26	20	17	24	20.8	18.1	10.4
5500/5500	56	37	28	22	19	26.4	22.9	19.9	11.5
6000/6000	61	41	31	25	20	28.8	25	21.7	12.5

ELECTRICAL CHARACTERISTICS AND CAPACITIES (Simultaneous/Three Phase Operation)

ELEMENT WATTAGE UPPER/LOWER	RECOVERY CAPACITIES GPH @ TEMPERATURE RISE OF					FULL LOAD CURRENT (AMPS) (TERMINAL L3/TERMINALS L1 & L2)		
	40°	60°	80°	100°	120°	208	240	480
3000/3000	61	41	31	24	20	25/14.4	21.7/12.5	10.8/6.3
4000/4000	81	54	41	32	27	33.3/19.2	28.9/16.7	14.4/8.3
4500/4500	91	61	45	37	31	37.5/21.6	32.5/18.8	16.2/9.4
5000/5000	102	68	51	41	34	41.6/24	36.1/20.8	18/10.4
5500/5500	112	74	56	45	37	N/A	39.8/22.9	19.9/11.5
6000/6000	122	81	61	49	41	N/A	N/A	21.7/12.5

LIMITED WARRANTY

This product features a three year limited warranty against tank leaks. Please refer to Commercial Warranty Information brochure for complete warranty information.



COMMERCIAL

DESIGNED WITH YOU IN MINDSM

RHEEM MANUFACTURING COMPANY, WATER HEATER DIVISION • 101 BELL ROAD, P.O. BOX 244020, MONTGOMERY, ALABAMA 36124-4020

"In keeping with its policy of continuous progress and product improvement, Rheem/Ruud reserves the right to make changes without notice."