



# COMMERCIAL

*DESIGNED WITH YOU IN MIND<sup>SM</sup>*

## STORAGE TANKS

RHEEM/RUUD Commercial Storage Tanks are vertical tanks designed for applications that require large quantities of hot water in short periods of time. When used in tandem with RHEEM/RUUD Commercial water heating equipment, these storage tanks provide the flexibility needed for many Commercial applications. Installed individually, or in parallel manifold, these storage tanks can provide 80% draw capability without an appreciable temperature decrease in single temperature applications.

### **Construction Features:**

**LONG LIFE TANK DESIGN** – Proprietary steel formulation with two coats of high temperature porcelain enamel to maximize corrosion resistance resulting in a superior tank design. Two heavy duty magnesium anode rods are installed for longer tank life.

**SPACE SAVING DESIGN** – Unlike other storage tanks, the ST80 and ST120 can pass through a 30" opening and the ST175 only requires a 33" opening – ideal for boiler room doors.

**EFFICIENT DESIGN** – 2" of rigid polyurethane foam insulation provides superior insulating qualities resulting in reduced operating costs. Our patented process of injecting foam into the insulating cavity adds additional durability and toughness to the baked enamel steel outer jacket.

**TANK OPENINGS** – Circulating line connections and hot outlet are 2" NPT on ST80, ST120 and 2-1/2" NPT on the ST175. Other openings are provided for relief valve and temperature control. ST175 equipped with a hand-hole cleanout.

### **Certifications and Ratings:**

**EFFICIENCY** – These models exceed the minimum efficiency requirements of ASHRAE Standard 90.1b-1992 (Part of the Federally mandated Energy Policy Act (EPact)).

**OPTIONAL CONSTRUCTION** – ASME construction is available on all storage tank models: ST80A, ST120A and ST175A.



80, 115 AND 175 GALLON CAPACITIES  
ASME MODELS AVAILABLE  
5 YEAR LIMITED WARRANTY

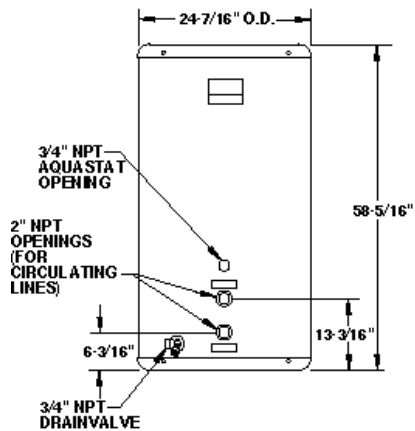
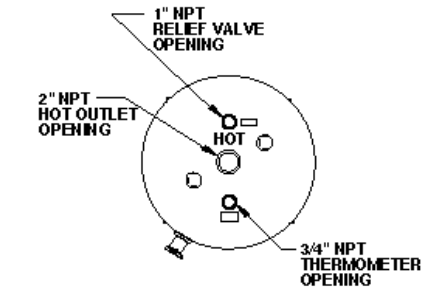
**FACTORY MANIFOLD KITS** – Factory kits are available for ST80 and ST120 models. Copper sweat fittings and tubing are precut and packaged at the factory. Each component is identified for ease of assembly and installation. This method will assure that multiple tanks (2, 3 or 4) will perform as a single unit and give the advantage of extreme flexibility.

## APPROXIMATE WIDTH REQUIRED FOR MANIFOLDED STORAGE TANKS

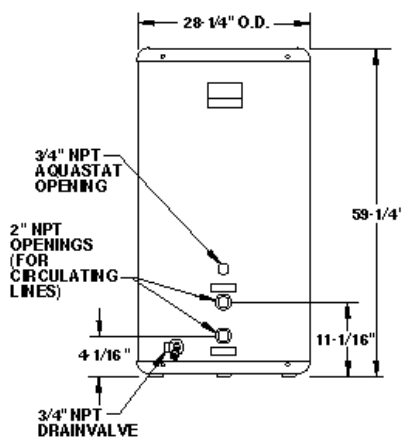
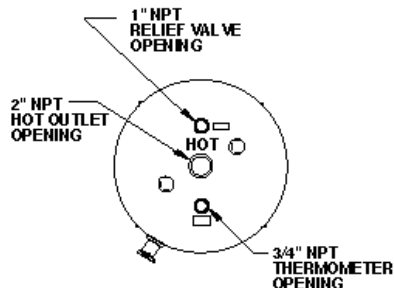
	ST80(A) (WITH FACTORY MANIFOLDS)	ST120(A) (WITH FACTORY MANIFOLDS)	ST175/ ST175(A)
DUPLEX	4'6"	4'9-1/2"	5'6-1/4"
TRIPLEX	6'9-1/2"	7'2-3/4"	8'5-3/4"
QUADRUPLEX	9'1"	9'8"	11'5"

## EQUIVALENT PRESSURE DROP CHART FOR CIRCULATING MANIFOLDS FOR 80 AND 115 GALLON MODELS

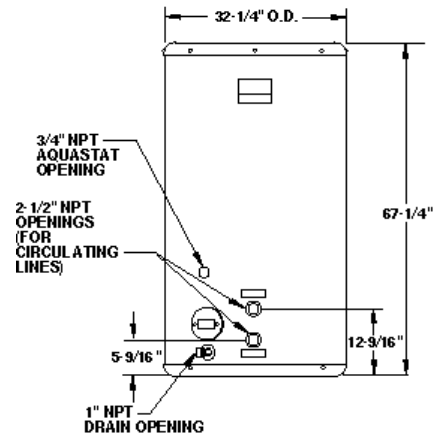
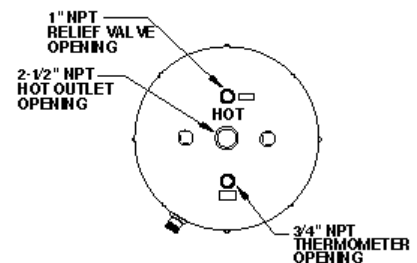
MODEL	EQUIVALENT PRESSURE DROP IN FEET OF PIPE MANIFOLD TYPE	PIPE SIZE						FLO
		1"	1-1/4"	1-1/2"	2"	2-1/2"	3"	COEFFICIENT
		CV						
120SS-2L	DUPLEX	1	4	9	30	82	250	61
120SS-3L	TRIPLEX	1.1	5	11	36	96	300	56
120SS-4L	QUADRUPLEX	0.5	2	5	18	47	145	80



**ST80, ST80A - 80 GALLON STORAGE**  
Shipping Weights:  
ST80 - 220 Lbs., 150 PSI MAX WP  
ST80A - 260 LBS., 125 PSI MAX WP



**ST120, ST120A - 115 GALLON STORAGE**  
Shipping Weights:  
ST120 - 300 Lbs., 150 PSI MAX WP  
ST120A - 340 Lbs., 160 PSI MAX WP



**ST175, ST175A (ASME) - 175 GALLON STORAGE**  
Shipping Weights:  
ST175 - 600 Lbs., 150 PSI MAX WP  
ST175A - 600 Lbs., 150 PSI MAX WP

## RECOMMENDED SPECIFICATIONS

Storage Tank(s) shall be model \_\_\_\_\_, manufactured by RHEEM/RUUD. Storage Tank(s) shall have a storage capacity of \_\_\_\_\_ gallons. Tank(s) interior shall be double coated with a high temperature porcelain enamel and furnished with two magnesium anode rods rigidly supported. Storage Tank(s) shall exceed the efficiency requirement of ASHRAE Standard 90.1b-1992. Tank(s) shall have a working pressure rating of \_\_\_\_\_ psi, and shall be completely assembled. Tank(s) shall be insulated with 2" of rigid polyurethane foam insulation. Storage Tank(s) shall be covered by a five year limited warranty against tank leaks.

OPTIONAL: ST80 and ST120 manifolds shall be pre-cut copper and packaged at the factory with necessary sweat fittings to insure component tanks perform as a single unit.

(Add for ASME Construction): Storage Tank(s) shall be constructed in accordance with the requirements of the ASME Boiler Pressure Vessel Code, Section IV Part HLW.

## LIMITED WARRANTY

This product features a five year limited warranty against tank leaks. Please refer to Commercial Warranty Information brochure for complete warranty information.



*DESIGNED WITH YOU IN MIND<sup>SM</sup>*